

ENDURANCE STEP LIGHT

WL-LED201

WAC®

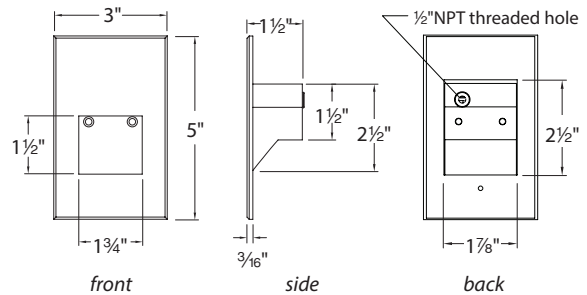


Fixture Type:

Catalog Number:

Project:

Location:



PRODUCT DESCRIPTION

With a sleek profile and no visible hardware, Endurance Step and Wall Lights are designed to seamlessly blend into any architectural environment. These luminaires deliver enhanced energy efficiency and optimized light output to effectively illuminate stairs, walls, and walkways with little to no glare.

Suitable for both indoor and outdoor applications, the factory-sealed IP67 light engine allows the fixture to withstand harsh outdoor environments.

FEATURES

- Direct wiring, no driver needed
- Low profile, flush to wall aesthetics with no visible hardware
- IP67 rated fully potted/sealed light engine
- 54,000 hour rated life
- Balanced lighting, free of shadows with minimum glare

SPECIFICATIONS

- Construction:** Die-cast aluminum
- Power:** Direct wiring, no remote driver needed.
Input voltage: 120V 50/60Hz
- Light Source:** Integrated LED Module, CRI 90+
Optional color lenses. Total power consumption of 3.5W
- Mounting:** Fits into 2" x 4" J-Box with minimum inside dimensions of 3"L x 2"W x 2"H
Includes bracket for J-Box mount.
- Dimming:** 100-10% ELV
- Operating Temperature:** -40°F to +122°F (-40°C to +50°C)
- Standards:** IP67, ETL & cETL Listed for wet locations
Title 24 JA8-2016 Compliant.

ORDER NUMBER

120V	Color Temperature	Lumens	Finish
WL-LED201 120V	27 Warm 2700K	65	WT White on Aluminum
	30 White 3000K		
	35 Cool 3500K		
	AM Amber 610nm		

*Brushed Nickel Finish is for interior use only



Example: **WL-LED201-30-SS**

wacighting.com

Phone (800) 526.2588

Fax (800) 526.2585

Headquarters, East Manufacturing Facility

44 Harbor Park Drive

Port Washington, NY 11050

South East Manufacturing Facility

1600 Distribution Ct

Lithia Springs, GA 30122

Central Manufacturing Facility

1700 South J Elmer Freeway, Ste 100

Cedar Hill, TX 75104

West Manufacturing Facility

1750 S Archibald Ave

Ontario, CA 91761